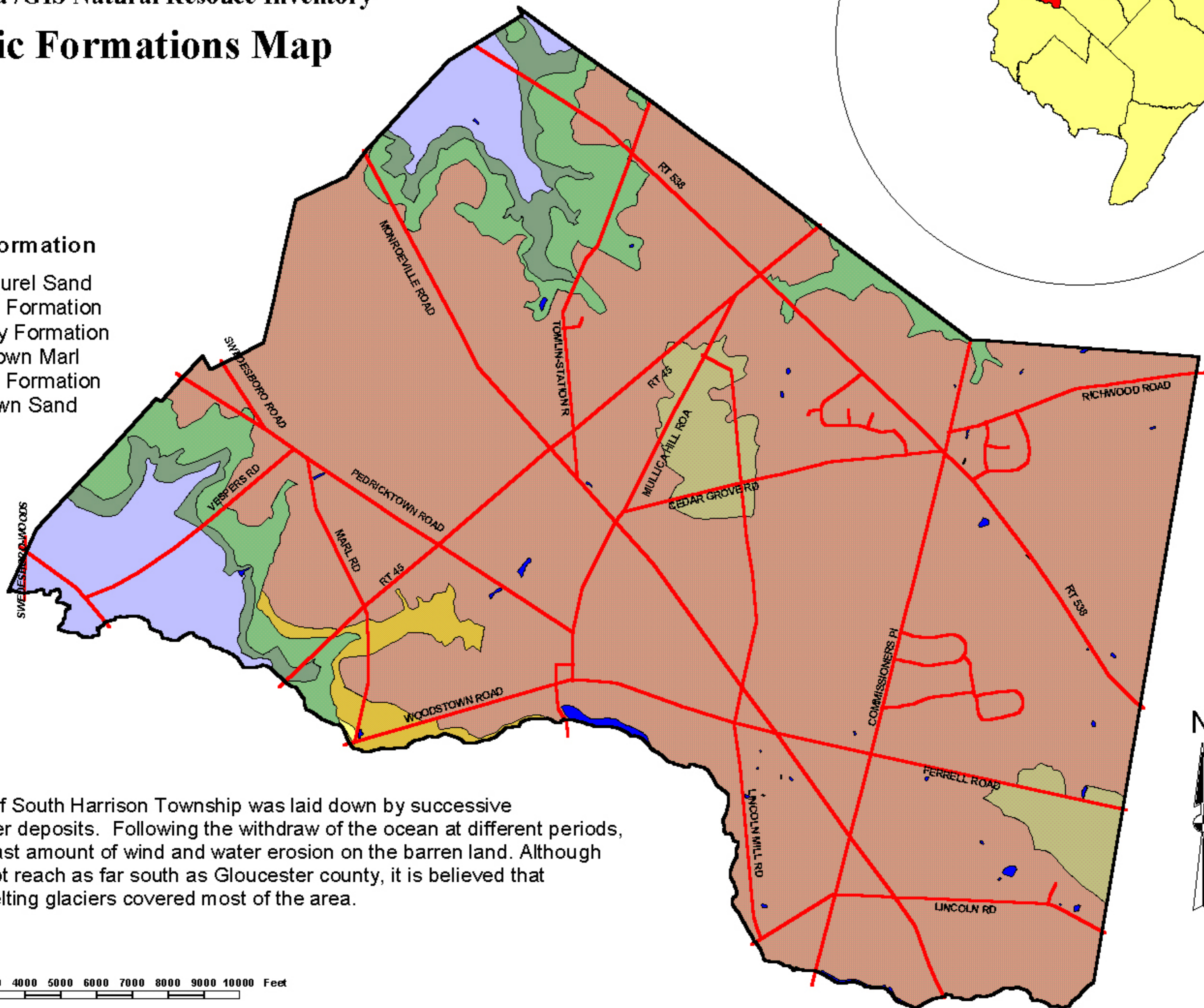


# Geologic Formations Map

## Geologic Formation

- Mount Laurel Sand
- Navesink Formation
- Cohansey Formation
- Hornerstown Marl
- Kirkwood Formation
- Vincetown Sand
- Water



The geology of South Harrison Township was laid down by successive ocean and river deposits. Following the withdraw of the ocean at different periods, there was a vast amount of wind and water erosion on the barren land. Although glaciers did not reach as far south as Gloucester county, it is believed that water from melting glaciers covered most of the area.

## scale

