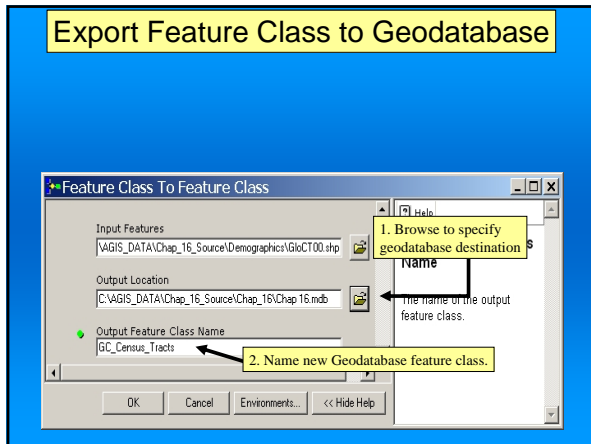
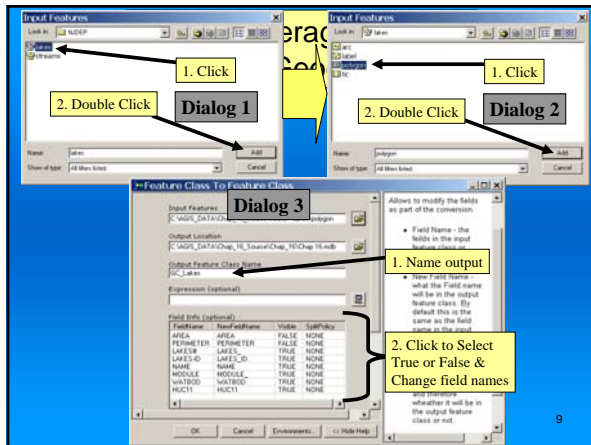
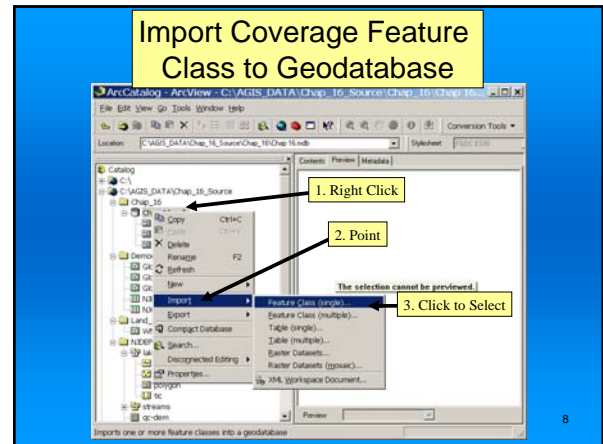


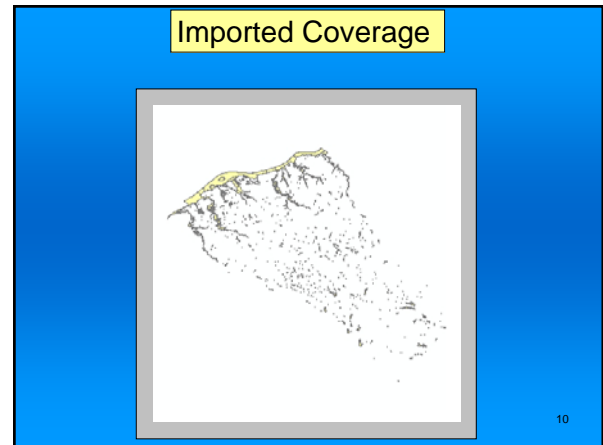
Export Feature Class to Geodatabase



Import Coverage Feature Class to Geodatabase



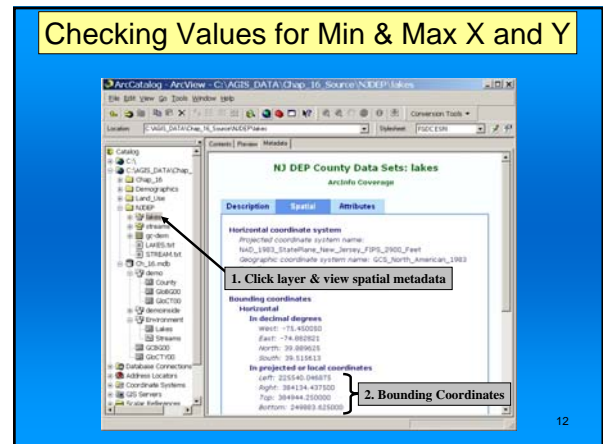
Imported Coverage



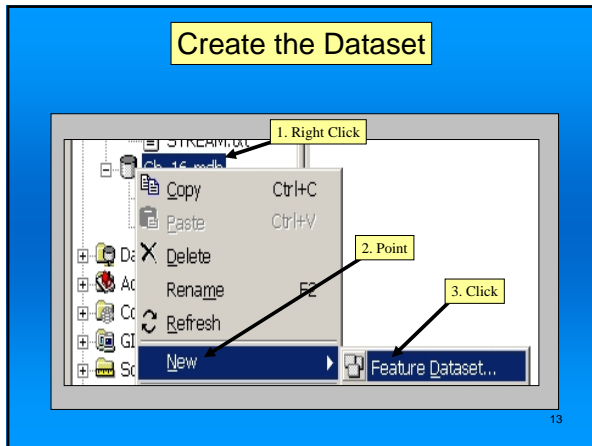
Creating Feature Dataset

- ❖ Check Values of feature classes to include in dataset:
 - ❖ Min X
 - ❖ Max X
 - ❖ Min Y
 - ❖ Max Y
- ❖ Create dataset
- ❖ Import feature classes

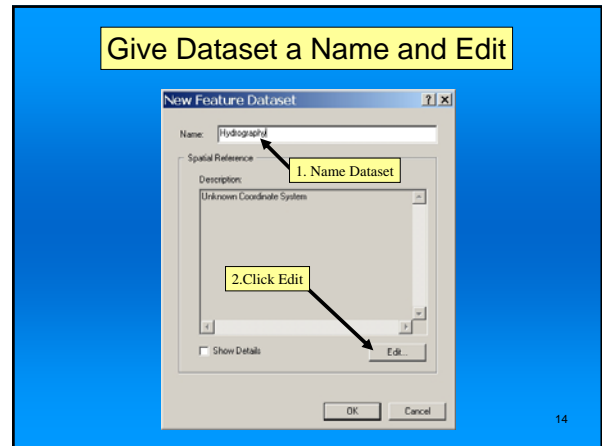
Checking Values for Min & Max X and Y



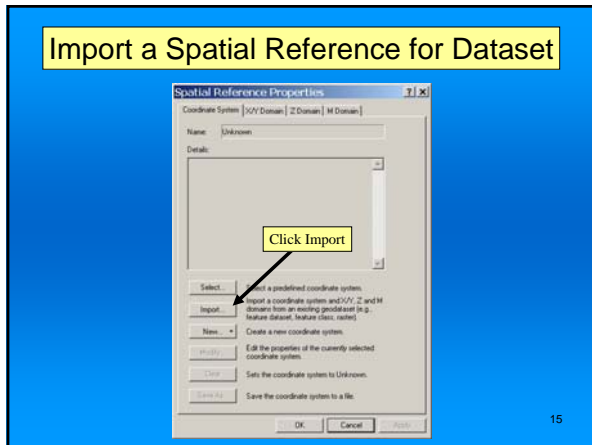
Create the Dataset



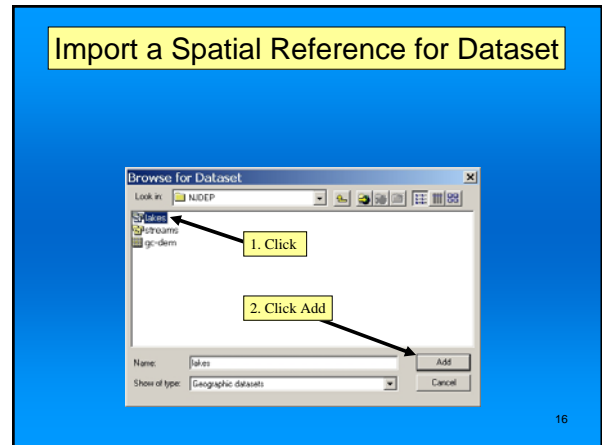
Give Dataset a Name and Edit



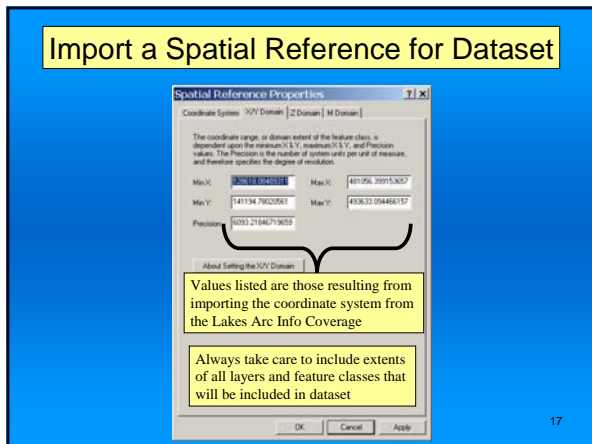
Import a Spatial Reference for Dataset



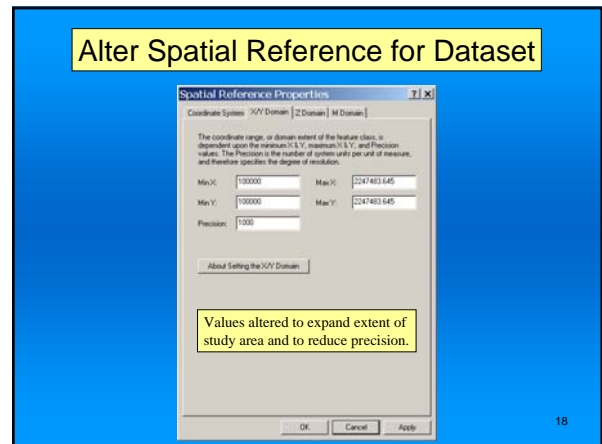
Import a Spatial Reference for Dataset



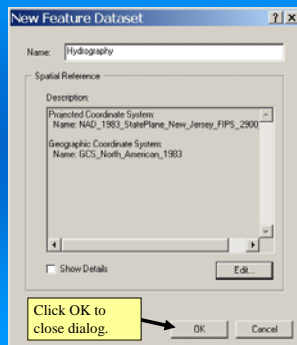
Import a Spatial Reference for Dataset



Alter Spatial Reference for Dataset

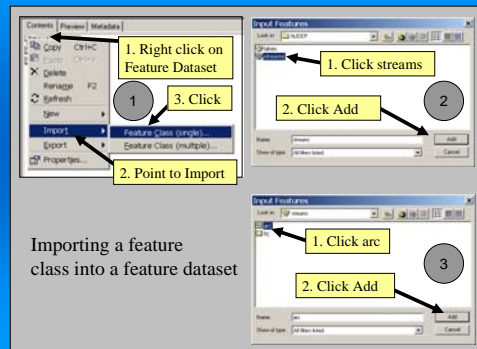


Close Dialog & Prepare to Import



19

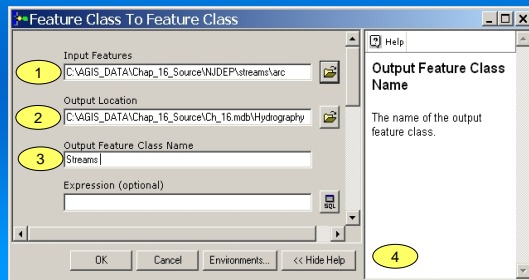
Import Stream Coverage



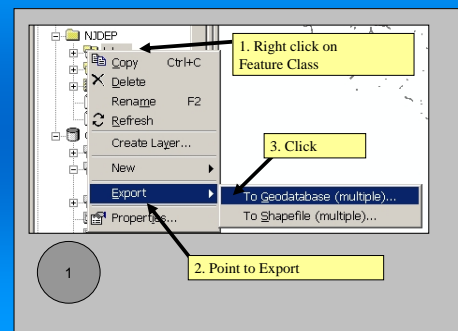
Importing a feature class into a feature dataset

20

Import Stream Coverage

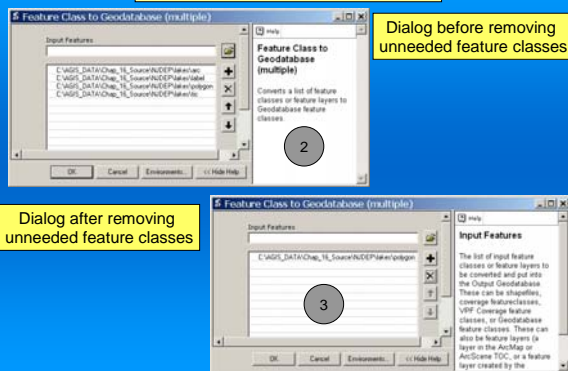


Export Lake Coverage to Dataset



22

Export Lake Coverage



Export Lake Coverage

