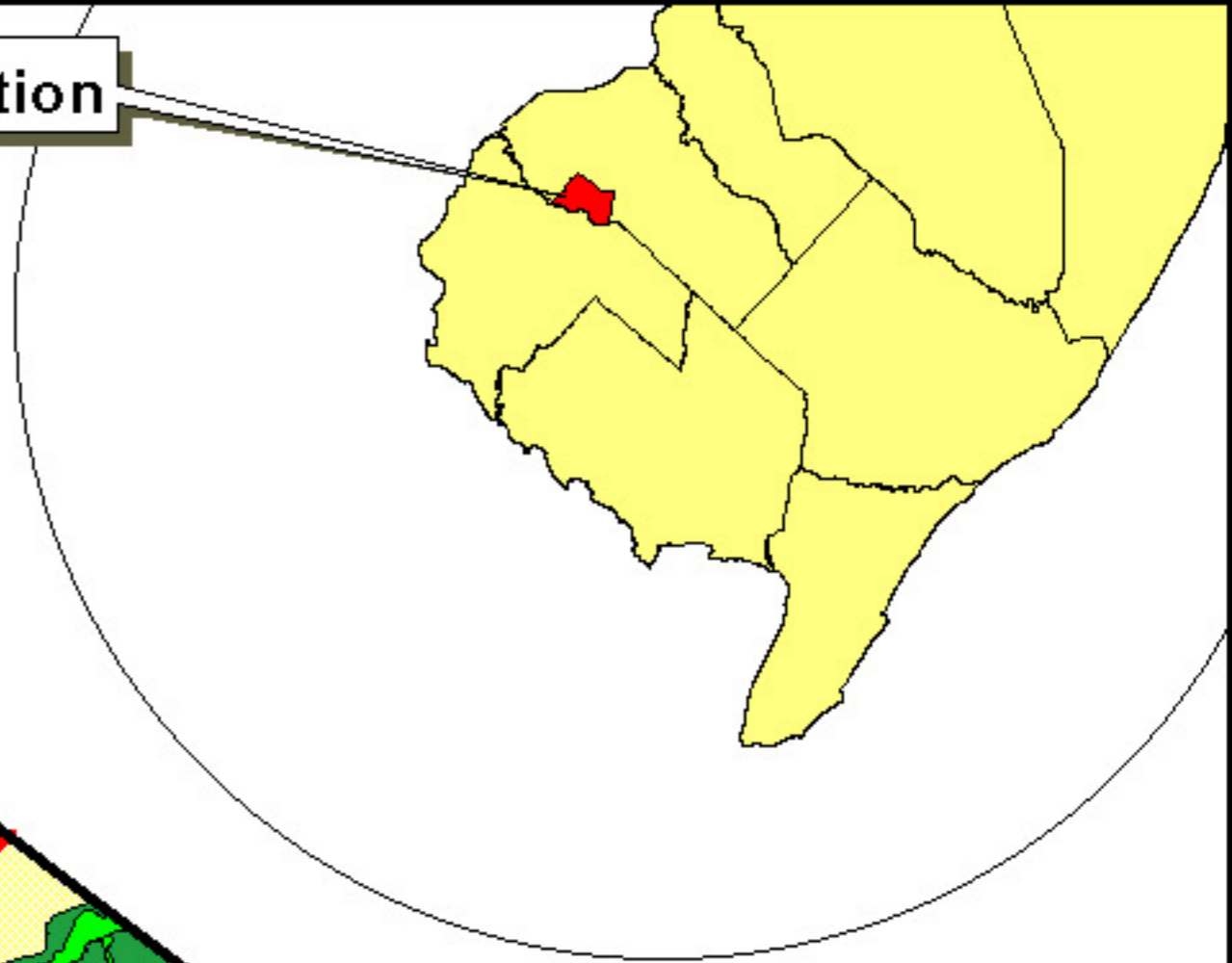
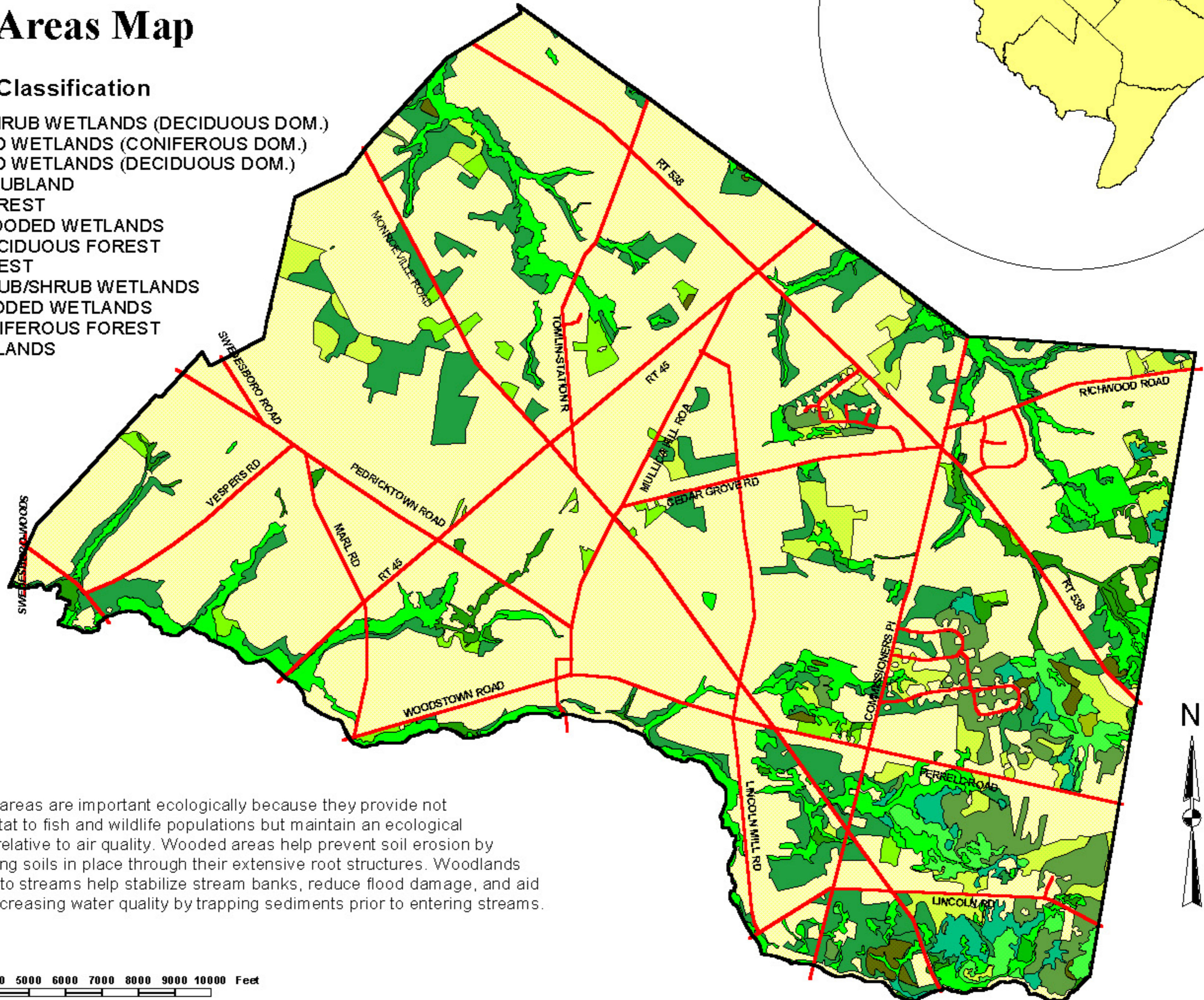


# Wooded Areas Map

## Forest Classification

- MIXED SCRUB/SHRUB WETLANDS (DECIDUOUS DOM.)
- MIXED FORESTED WETLANDS (CONIFEROUS DOM.)
- MIXED FORESTED WETLANDS (DECIDUOUS DOM.)
- BRUSHLAND/SHRUBLAND
- CONIFEROUS FOREST
- CONIFEROUS WOODED WETLANDS
- CONIFEROUS/DECIDUOUS FOREST
- DECIDUOUS FOREST
- DECIDUOUS SCRUB/SHRUB WETLANDS
- DECIDUOUS WOODED WETLANDS
- DECIDUOUS/CONIFEROUS FOREST
- NON-FORESTED LANDS



Wooded areas are important ecologically because they provide not only habitat to fish and wildlife populations but maintain an ecological balance relative to air quality. Wooded areas help prevent soil erosion by maintaining soils in place through their extensive root structures. Woodlands adjacent to streams help stabilize stream banks, reduce flood damage, and aid toward increasing water quality by trapping sediments prior to entering streams.

### scale

