

Clinics in the Sustainable Facility Center

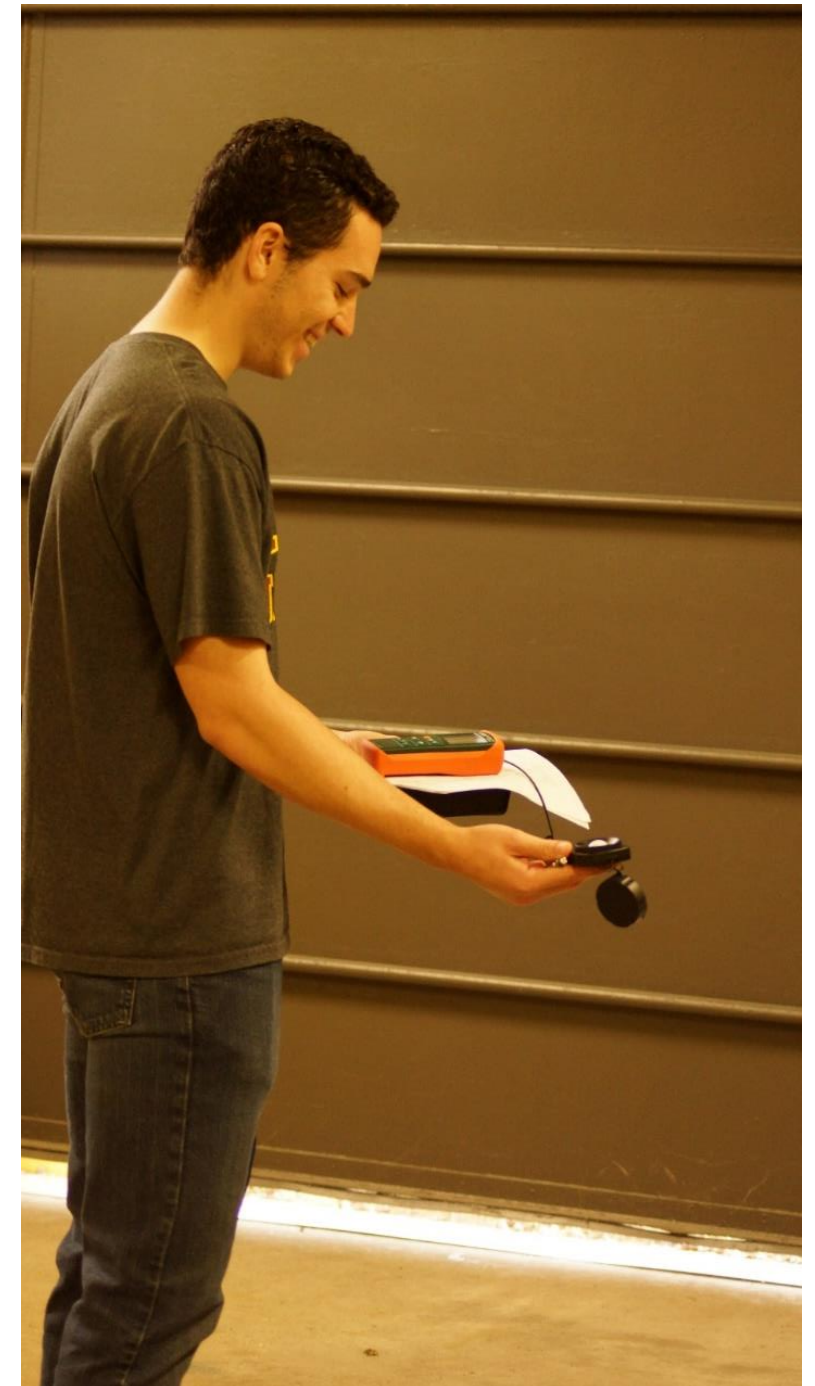
- Work with the **NJ Department of Military and Veterans Affairs** to sustainably manage **Army National Guard Facilities**
- Four clinics (see next slides)
- Use Rowan Hall 222 to study or do homework following social distancing & capacity requirements
- Good for careers in the Architecture/Engineering/Construction (AEC) Industry, Facility Management or Sustainable/Green Engineering
- Can lead to a paid summer internship
- Can lead to a paid graduate school position in the SFC

NJDMAVA Building Audits Clinic

(Riddell/Bauer/Haas)

- Conduct Building Audits (Energy & Water) for NJ Department of Military & Veterans Affairs
 - Use field equipment to collect data
 - Model energy consumption
 - Make recommendations used by client to save energy and water
 - www.state.nj.us/military
 - www.state.nj.us/military/publications/energy

There are site visits!
Looking for CEEs, MEs & ECEs. Encourage your ME/ECE friends!
MEs must request Prof. Haas' Audit Clinic



NJDMAVA Sustainable Facilities Clinic

(Everett/Riddell)

- Implement cutting edge sustainable facility management software
 - BUILDER SMS & FacilityDude
- Develop solutions to unique problems at National Guard facilities

- www.state.nj.us/military
- www.sms.erdc.dren.mil
- www.dudesolutions.com

There are site visits!
Two semester commitment to SFC clinics preferred.



NJDMAVA Resiliency Clinic

(Everett/Riddell)

- Help NJDMAVA evaluate [cool roof](#) technologies
- Research other innovative technologies to save energy and reduce greenhouse gasses
- Develop education/awareness materials
 - arng.ng.mil/About-Us/Pages/Army-National-Guard-Sustainability.aspx
 - www.nj.gov/military/publications/energy

Expect Site Visits!

Two semester commitment to SFC clinics preferred.

Clean Cut Quarterly

NJARNG Sustainability Newsletter

In collaboration with Rowan University

December 2017 Volume 3 - Issue 3



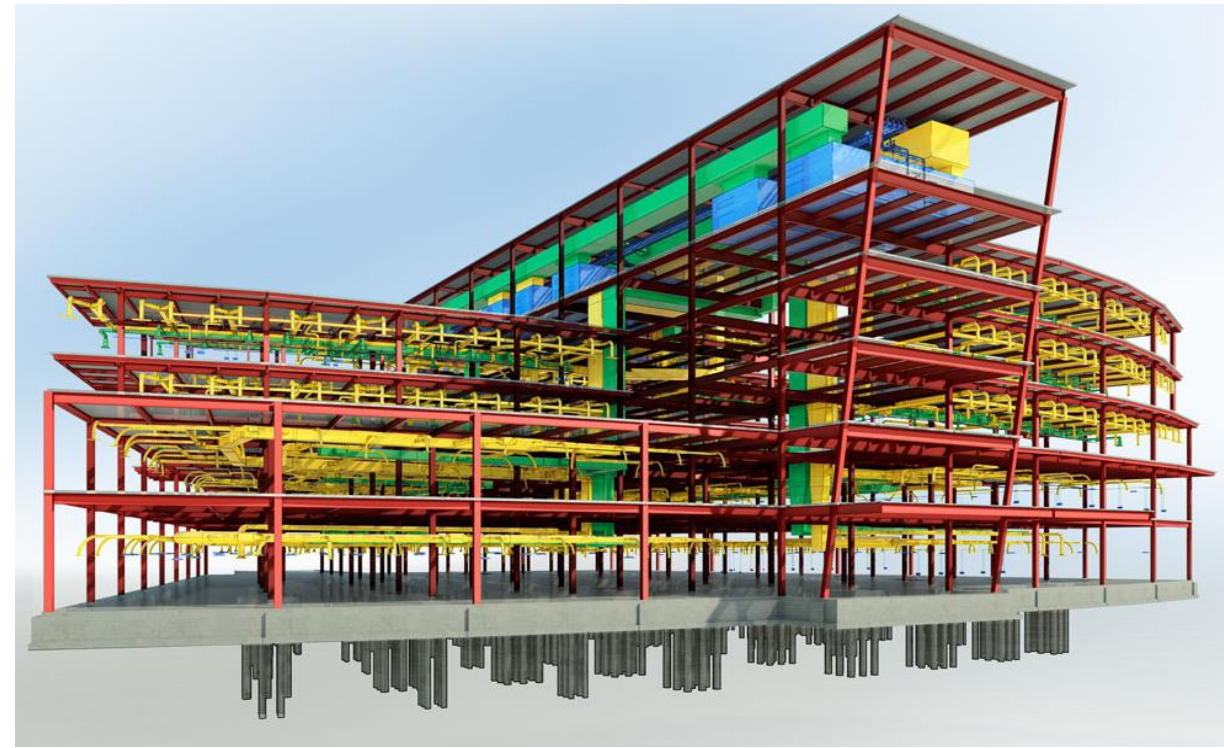
NJDMAVA BIM Clinic

(Everett/Riddell)

- Use Autodesk software to create 3D Building Models
 - ReCap to stitch point clouds
 - REVIT to draw 3D Building Models
 - Insight to model energy consumption

Students have to use secure workstations in RH 222. Two semester commitment to THIS clinic required.

www.autodesk.com/solutions/bim/overview



<http://www.articbuildingservices.com>