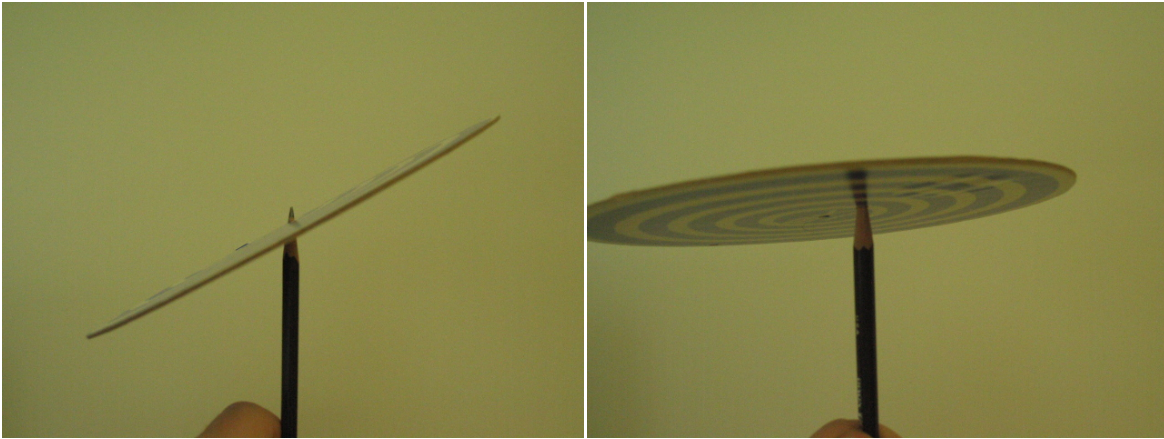


Center of Gravity Disc



Purpose: To show that an objects center of gravity may not be where it appears to be.

Location: room 136, shelf M5

Although this disc is circular and it would appear “obvious” that its center of gravity should be in at its geometric center, a simple attempt to balance it there shows otherwise. (What could cause this?) An unseen, off-center mass has been concealed inside the disc, so it balances, nearly an inch away from center, by the other hole (more easily done on your fingertip). You can also show that it rotates much more easily about a pencil point placed at its center of mass (or gravity) than one placed at its geometric center.