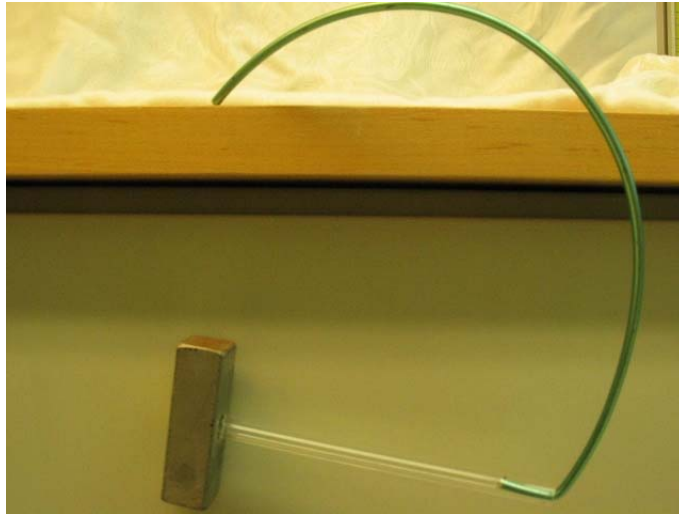


Floating Hammer



Purpose: To show that an object will remain stable if its center of gravity is located beneath the point of support.

Location: room 136, shelf M6

Place the short, straight portion of the wire into the tube that serves as the hammer's handle. Suspend the hammer by placing the tip of the curved end of the wire on top of a table's edge (shown), on your fingertip, or on any easily seen supporting surface. Tap the hammer lightly and observe it swing back and forth. Compare this to trying to balance a pencil on its point and discuss why the hammer is in stable equilibrium but the pencil is not.