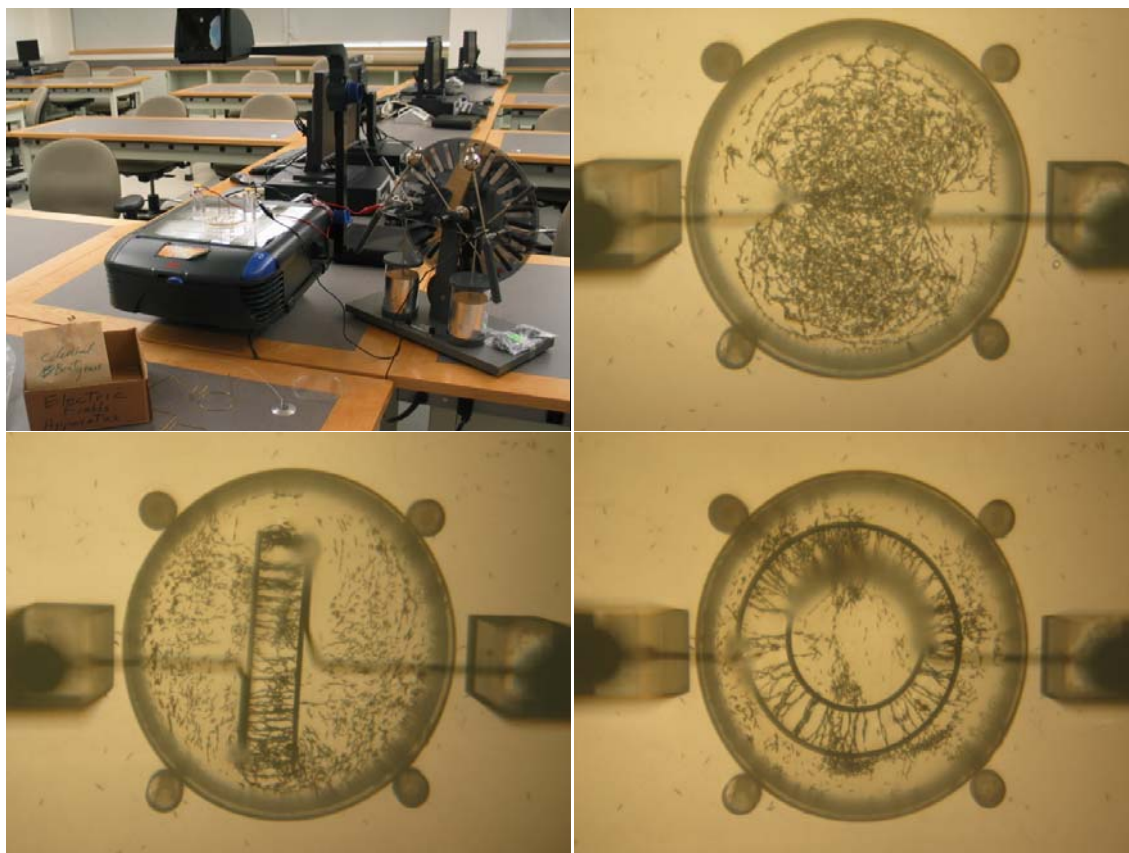


Visualizing Electric Fields (WM)



Purpose: To help students visualize electric fields created by charged conductors of various shapes using our Electric Fields Apparatus.

Location: room 146, shelf L6, (Wimshurst machine, L2)

Pour some corn oil in the Petri dish and sprinkle a small amount of grass seed evenly on the surface. Place the dish within the 4 alignment pins, set the apparatus on the overhead projector, and insert the chosen rod shapes into the rod-holder posts and tighten thumbscrews. Connect the patch cords to the ends of the brass rods with the alligator clips and insert the banana plug ends into the holes on the + and – terminals on the Wimshurst machine. (See first photo.) Slowly turn the crank to see patterns such as shown other photos above. (Leave Leyden jar handles in up/disconnected position on Wimshurst.) Do not dump. Leave oil and seeds in the dish and cover it.